

## COLD HARD EVIDENCE

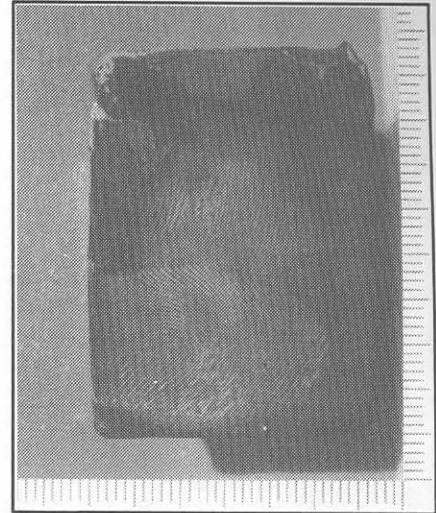
Gary W. Kimble Hernando County Sheriff's Office

As the warm days of summer approach, some technicians and law enforcement personnel get into their vehicles and head towards a burglary call just waiting for the victim to offer them a cold drink with ice cubes swimming in it. STOP DRINKING YOUR EVIDENCE!! Remember that if you are hot so was the burglar. Look around to see if the burglar helped

themselves to a cold drink of their own. If they had to break out a new tray they probably did so in the normal fashion by grasping both ends and twisting. If the two cubes remain in each end of the tray they may have excellent prints on them.

The print material and the heat of the hand can inlay enough material to cause a variance in the surface. As long as the cube remains intact the print can be processed with black powder and a standard fingerprint brush. You must have a camera with a suitable close-up lens ready because as expected this evidence is temporary at best.

Simply remove the ice cube and quickly dust the top then immediately return it to the freezer until the camera is ready. Remove one cube at a time and place it on a flat, well lit surface. As the surface becomes moist the print will become more defined. Lightly blowing on the surface will speed the process, but care must be taken to avoid destruction. Photograph quickly when detail is visible because when the water builds up



*Print as it appears after layer of moisture covers surface.*

enough to spill over your print goes with it. As with any other surface a limited amount of material deposited will limit success. If you know that a burglar touched the surface, it may be worth more to your job than a glass of water.

Editor's note: Gary states that he has used this procedure in actual cases and laboratory controlled experiments!



*Print as it appears on initial exam when removed from freezer.*

## EMPLOYMENT OPPORTUNITY

### CRIMINAL IDENTIFICATION TECHNICIAN

Police Department  
Coral Springs, Florida

**SALARY:** \$23,719 - \$33,207 Year

Major job duties include processing scenes and collection of evidence and classifying fingerprints.

#### REQUIREMENTS:

High School graduate or GED, and completion of I.D. course; minimum of one-year experience; knowledge of photography and familiarity with AFIS preferred.

#### CONTACT:

Human Resources  
Coral Springs Police Department  
2801 Coral Springs Drive  
Coral Springs, Florida 33065  
Phone: 305-346-1310



*Does anyone know who's vehicle this is? Is there a product identification number on it somewhere?*

*Any member wishing to be considered for a 1995/1996 Committee Appointment, contact First Vice President Thomas Fadul at 305-471-3333.*